

*Less Lag. More Frag.™*

# Guide to Gaming with ESET Security

---

*Tips to customize your ESET security product for maximum gaming performance*

# Contents

- Introduction ..... 3
- Tip 1: Use Advanced mode to access more detailed settings ..... 4
- Tip 2: Minimize interruptions by limiting alerts and notifications..... 5
- Tip 3: For tournament play, update only during off hours..... 7
- Tip 4: Reduce lag by only auto-scanning executable files..... 13
- Tip 5: Fortify defenses by setting up a daily deep scan..... 17
- Final thoughts ..... 23

## Introduction

This guide provides tips and tricks for getting the most performance from your computer while keeping your malware defenses active and strong.

ESET NOD32 Antivirus® and ESET Smart Security® are fast and secure when configured with the default settings, so even if you do not use any of these tips, your gaming experience will not be compromised. ESET security products are also highly customizable so you can pick and choose your performance settings according to your personal preferences. Use any or all of these tips, or create your own settings – the choice is yours.

Note that the screen shots used in this document are taken from ESET Smart Security. ESET NOD32 Antivirus users will see slightly fewer settings and icons, but these instructions will work for either product unless specifically noted. See [www.eset.com/solutions/gaming.php](http://www.eset.com/solutions/gaming.php) for a list of the differences between the two products.

**Warning:**

Some of these tips will reduce your security level from the default settings. They are intended for advanced users who are trying to get maximum performance from their computers, while still maintaining a reasonable level of security. They are not recommended for average computer users, business environments, or systems where the highest security is desired.

## Tip 1: Use Advanced mode to access more detailed settings

In order to access many of the settings for the following tips, you will need to activate Advanced mode. Use the menu in the lower left corner to switch modes (see Figure 1-1). Toggling to Advanced mode will add the **Tools** option to the main menu, giving you control over more settings and features.

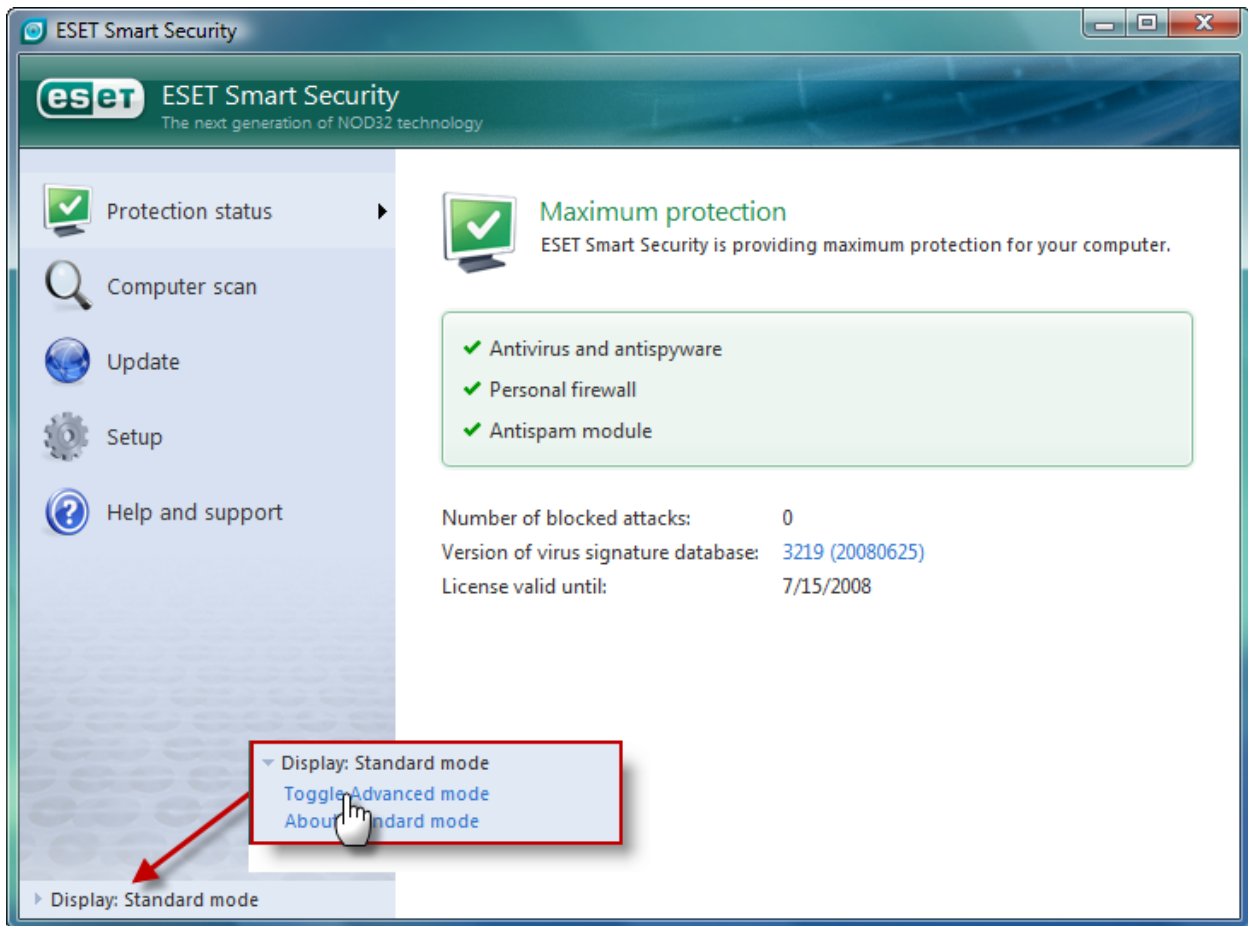


Figure 1-1

## Tip 2: Minimize interruptions by limiting alerts and notifications

While ESET will not bother you with a lot of pop-ups and noise in its default configuration, you can further streamline your gaming experience using the following options. First, open the Advanced Setup tree to access more detailed settings: Click **Setup** from the main menu on the left, and then click **Enter entire advanced setup tree...** at the bottom of the **Setup** window.

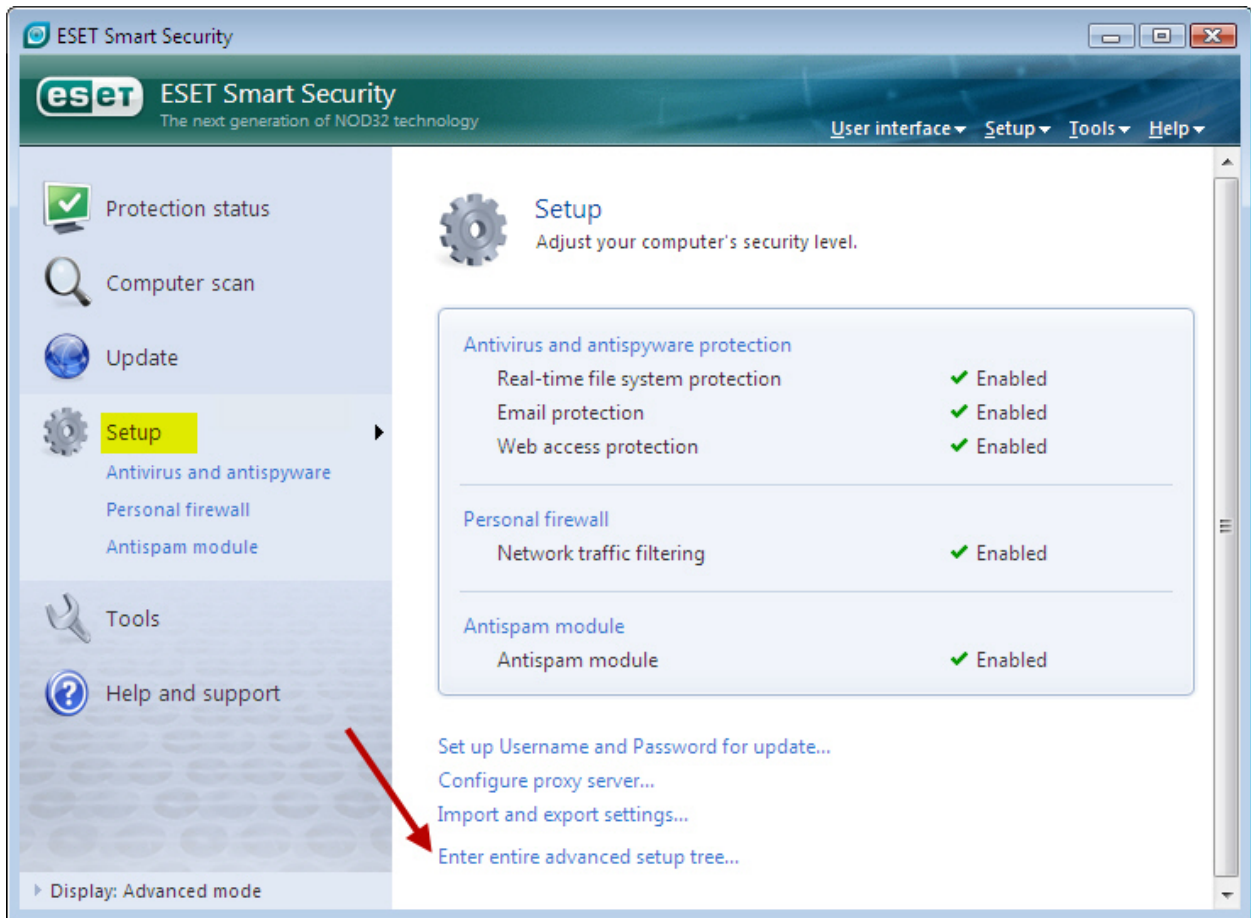


Figure 2-1

From the Advanced Setup tree on the left, click **User interface > Alerts and notifications** (scroll down if necessary). While it is possible to remove display of all alerts, in most cases you will want to see alerts that require your attention (e.g., malware that cannot be cleaned automatically). Select the **Display only notifications requiring user intervention** option.

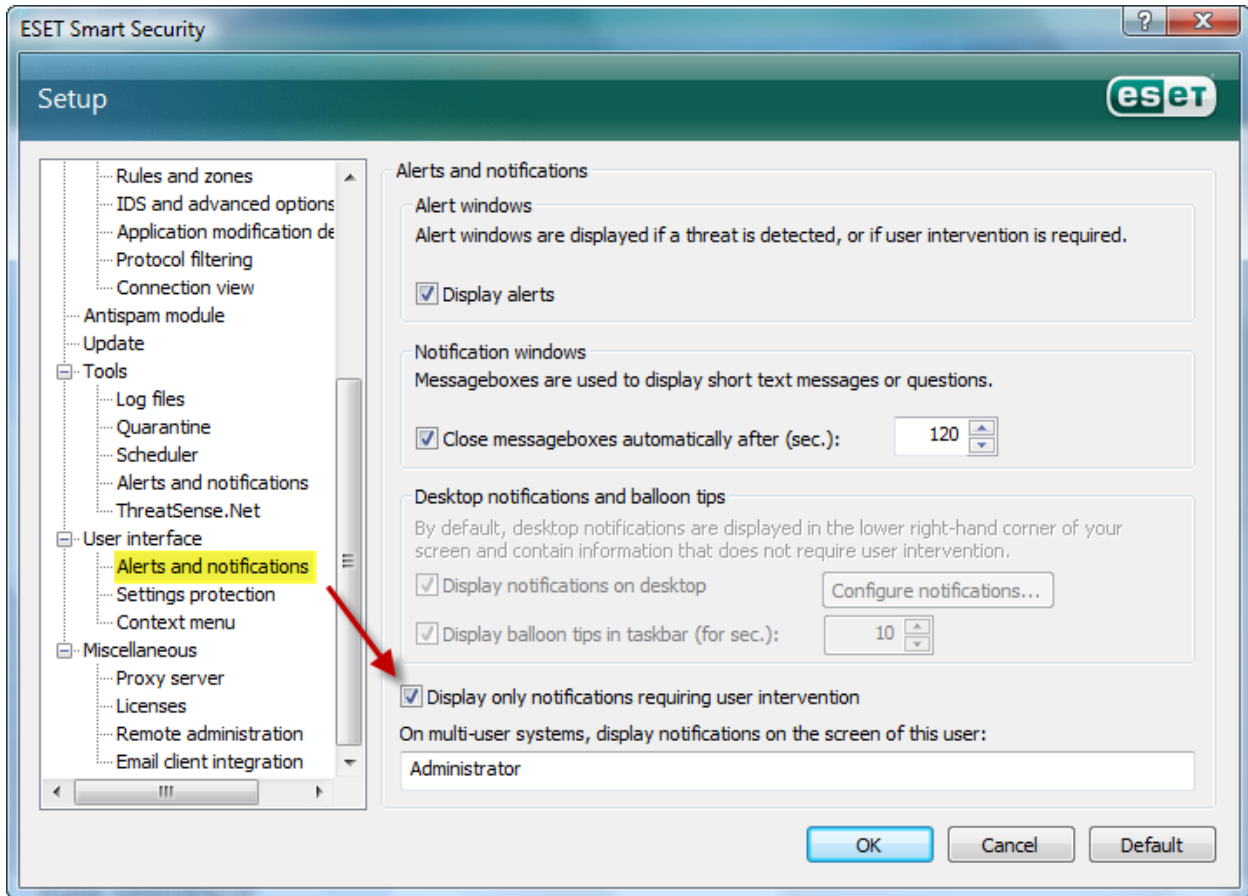


Figure 2-2

### Tip 3: For tournament play, update only during off hours

We generally recommend the default settings, which check for updates every hour and download when new updates are available (typically 2-3 times a day). ESET updates are very small (< 50K) and use almost no bandwidth or processing overhead. For tournament or extreme online play, however, it may be preferable to update only when the computer is not in use for gaming. By configuring your ESET security product to check for updates only when you are not playing, you can still receive necessary updates while completely eliminating any update-related lag.

**NOTE:** Because this technique may delay getting important security updates, and the benefits to using it will not be noticeable unless the computer is under very heavy use, we recommend that you make this change only if you are setting up for tournament-level play.

First, click **Tools > Scheduler** from the main menu on the left and then click **Add...** in the **Scheduler/Planner** window.

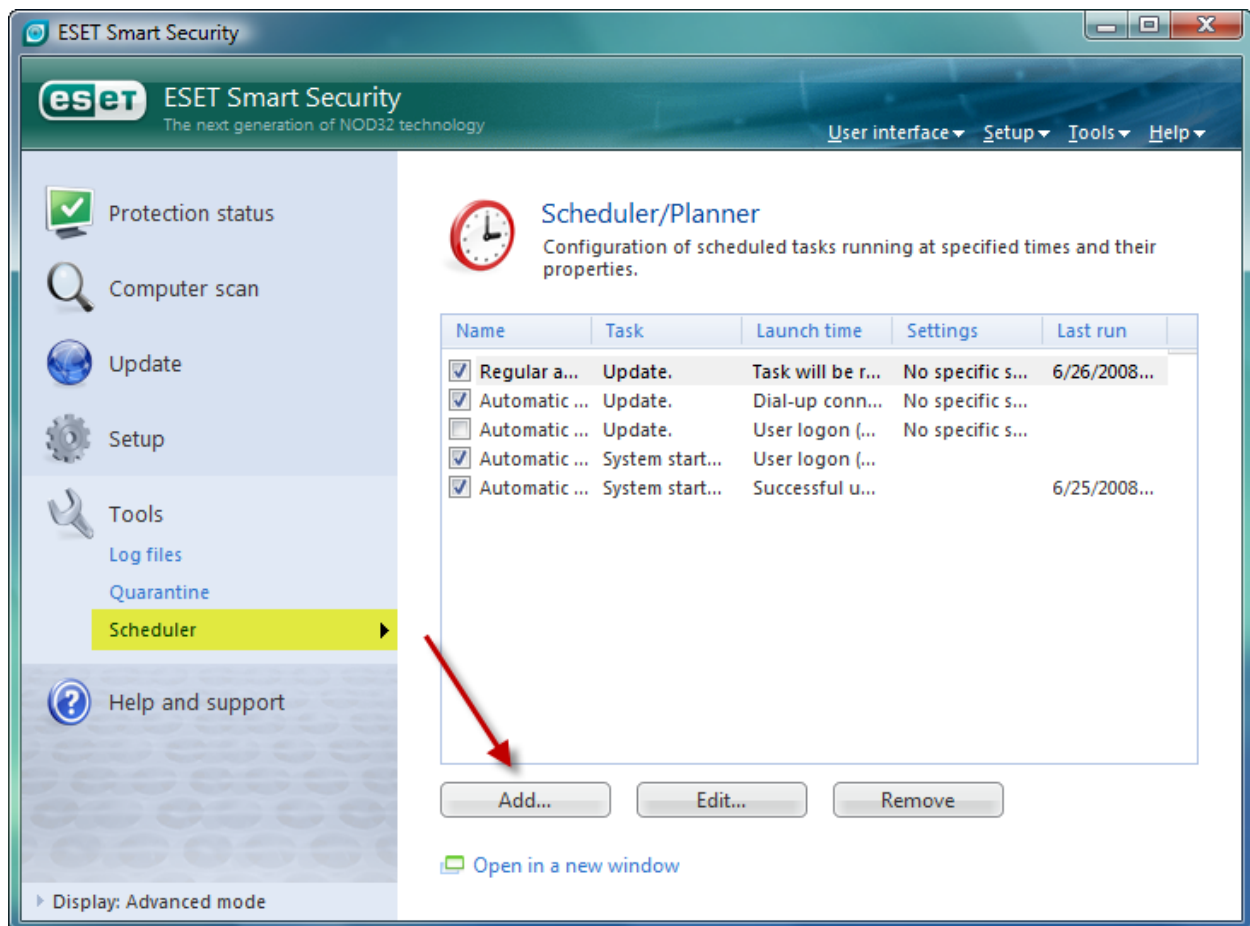


Figure 3-1

From the **Scheduled task**: drop-down menu, select **Update** and then click **Next**.

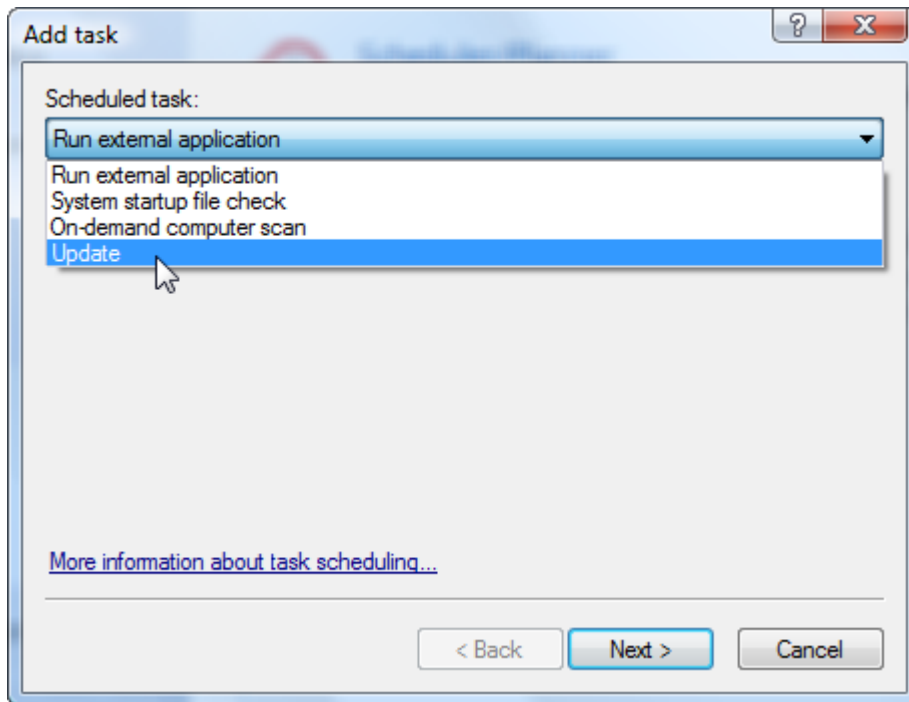


Figure 3-2

Give the task a name (this will appear in the schedule list), and choose how often to run it. Selecting **Daily** allows you to pick an exact time to check for updates.

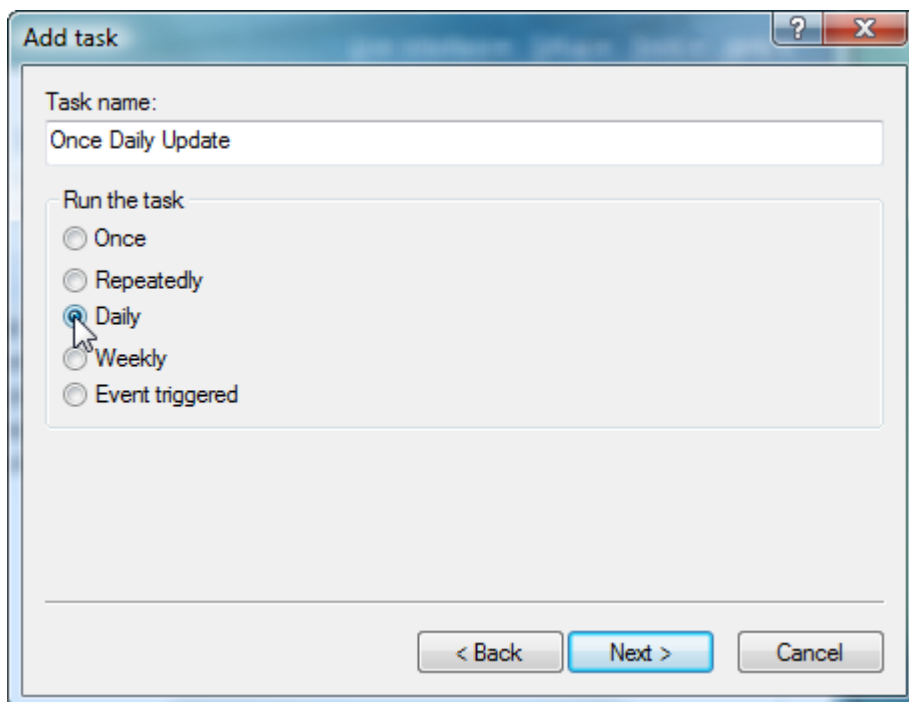
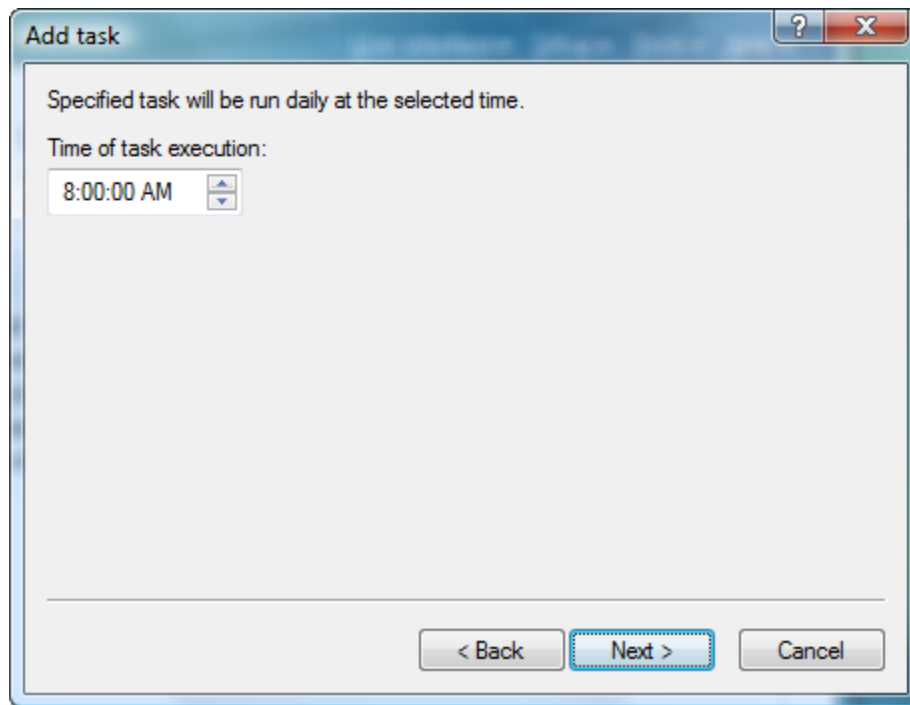


Figure 3-3

Next, choose a time when the computer will be on, but not in critical use. Keep in mind that ESET's updates are already very efficient, so only the most intensive use will be noticeably affected by an update.



**Figure 3-4**

Next, decide which action to take if the update cannot run at the scheduled time (e.g. the computer was turned off). Choosing the option shown in Figure 3-5 will run the update as soon as the computer powers up again.

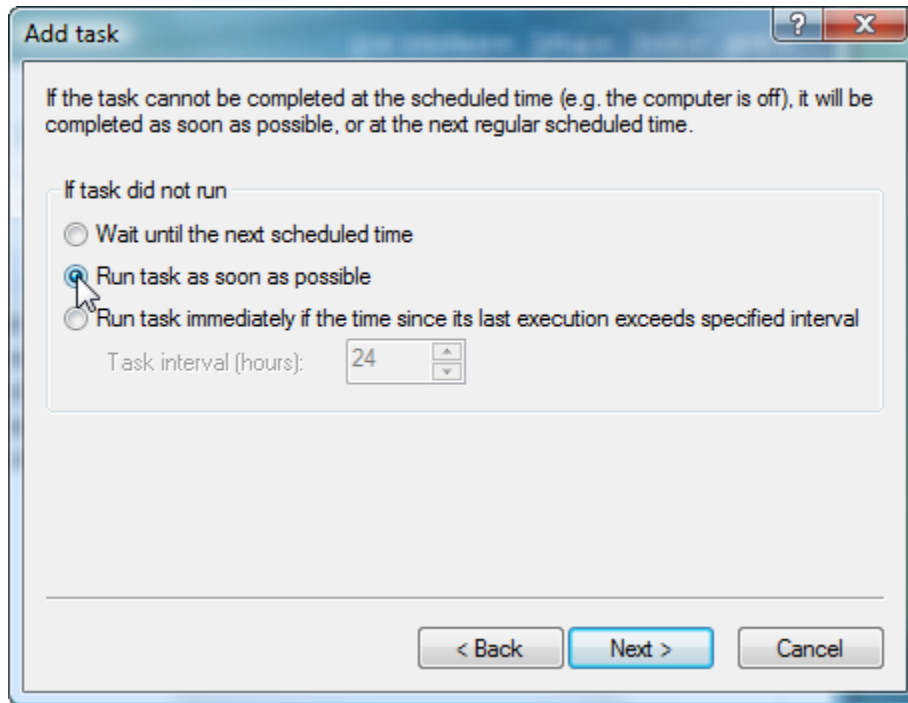


Figure 3-5

Click **Finish** when you have configured all settings according to your preferences.

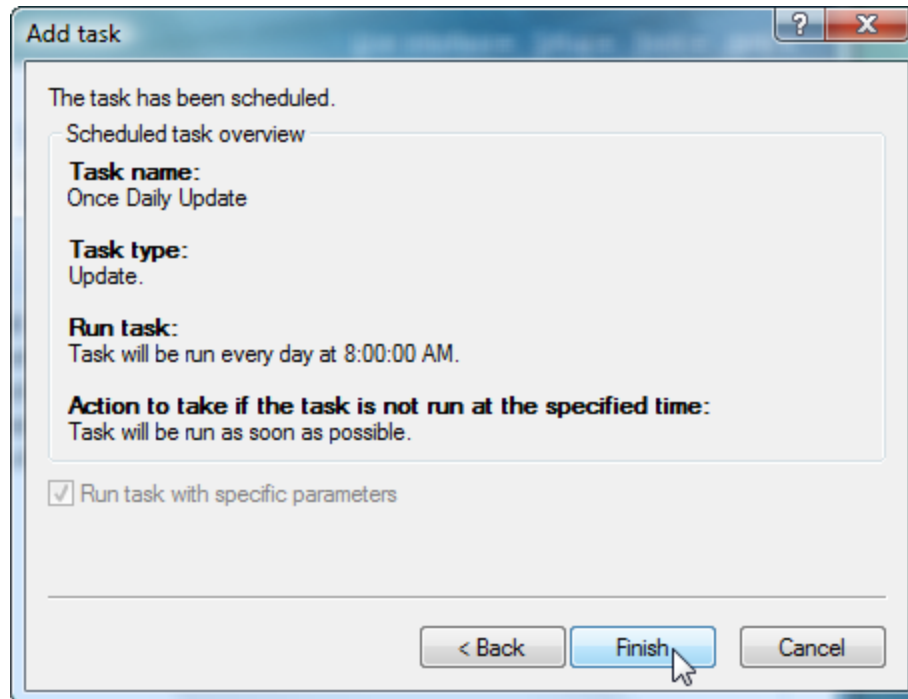


Figure 3-6

Now that you have a task scheduled, you need to pick an update profile to use. Select the built-in profile, **My profile**, which was created during the installation process and contains your license information (or a trial license if you downloaded the trial version). The Secondary profile is primarily for business users who may download updates from different networks, depending on how their company is set up – so just leave it blank.

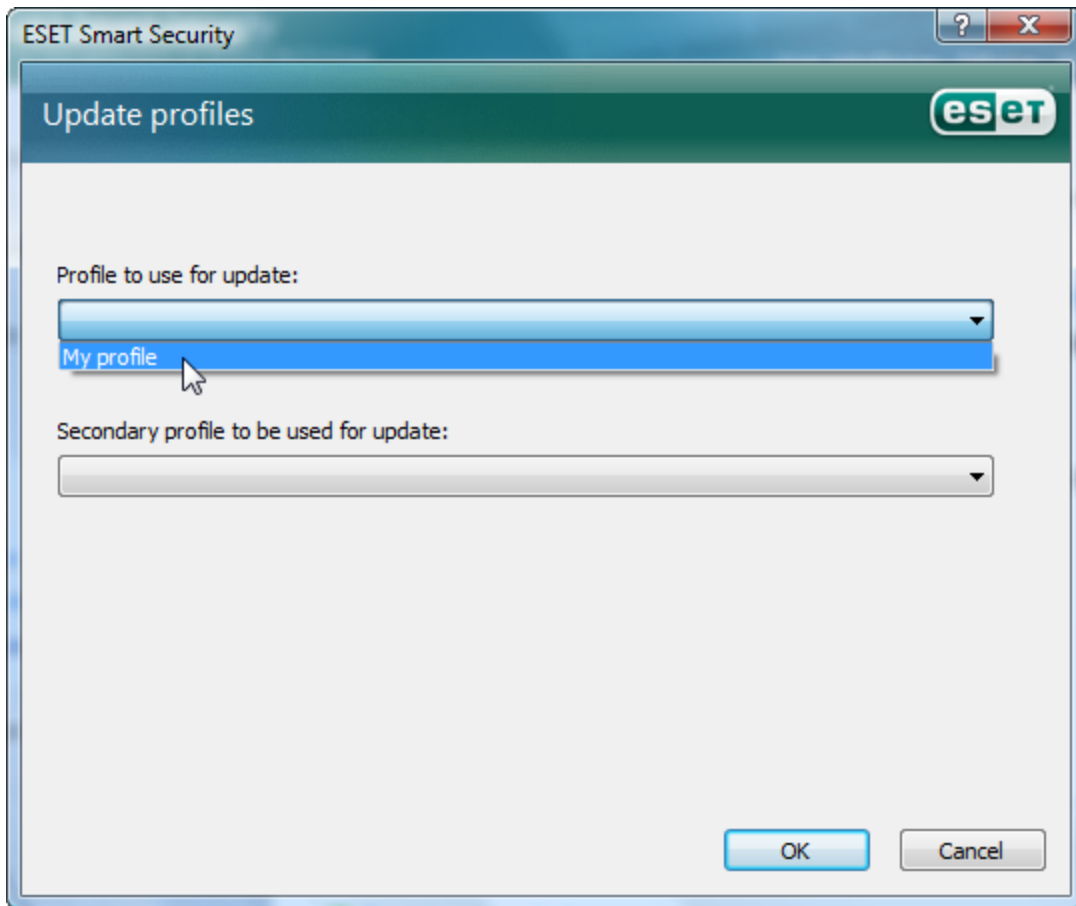


Figure 3-7

Now that the new update task is scheduled, you can turn off the Regular automatic update by deselecting its check box (First click **Tools > Scheduler**).

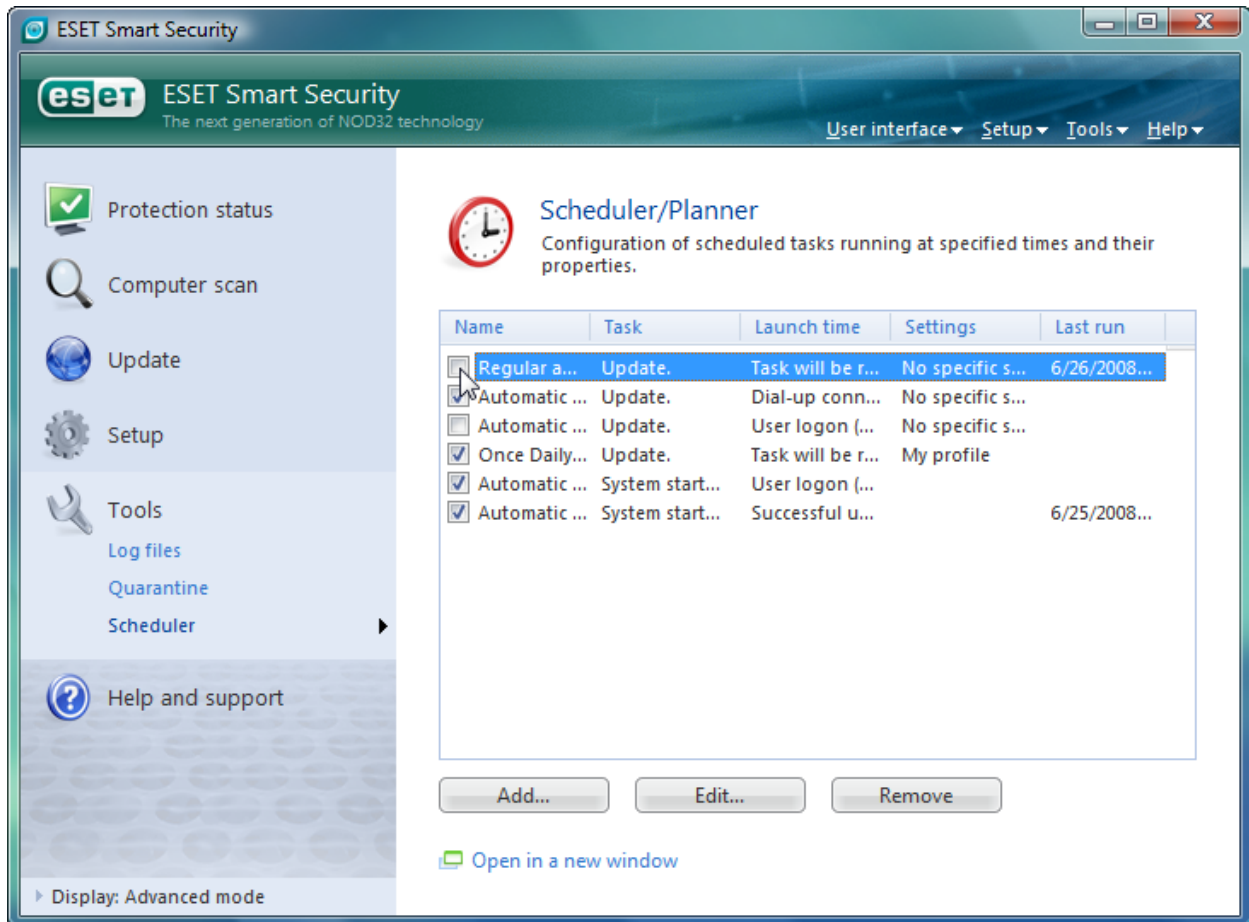


Figure 3-8

## Tip 4: Reduce lag by only auto-scanning executable files

By default, ESET scans any file that is accessed or created. Our advanced scanning techniques tailor the scan based on file type, to increase speed and effectiveness. You may be able to further reduce scanning overhead by configuring the program to scan only files that are executable, or are known to allow embedded commands. Examples of these types of files are programs, documents (that may contain macros), and self-extracting .zip files. Pure data files, text files, and pictures are examples of files that will not be scanned.

**Important:** If you use the following configuration tip, also be sure to schedule a daily scan (see Tip 5: Fortify defenses by setting up a daily deep scan), as some system attacks can be initiated by non-executable files.

From the main menu, click **Setup > Antivirus and antispyware**, and then click **Configure...** to the right.

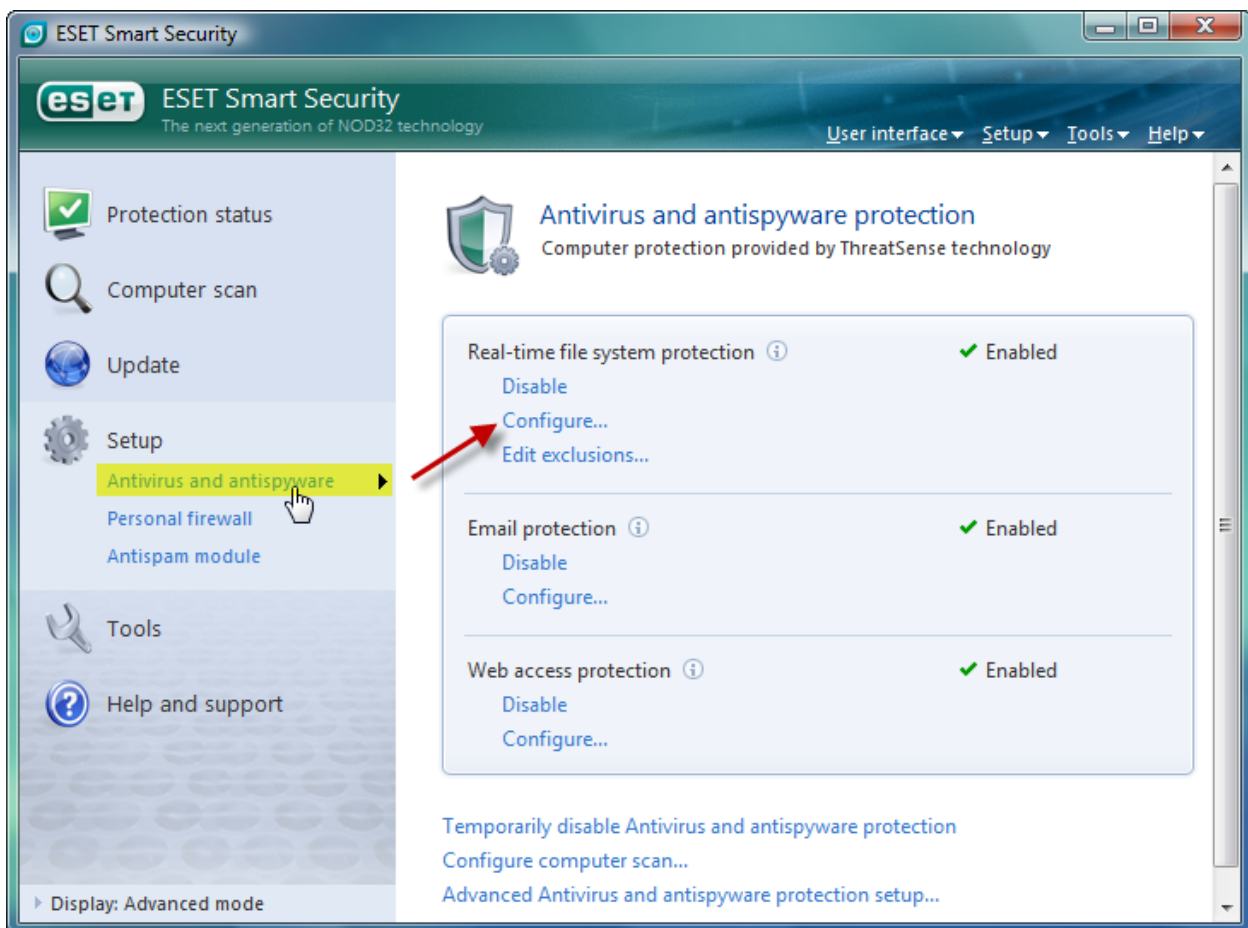


Figure 4-1

Next, click the **Setup...** button to access the ThreatSense engine parameter setup.

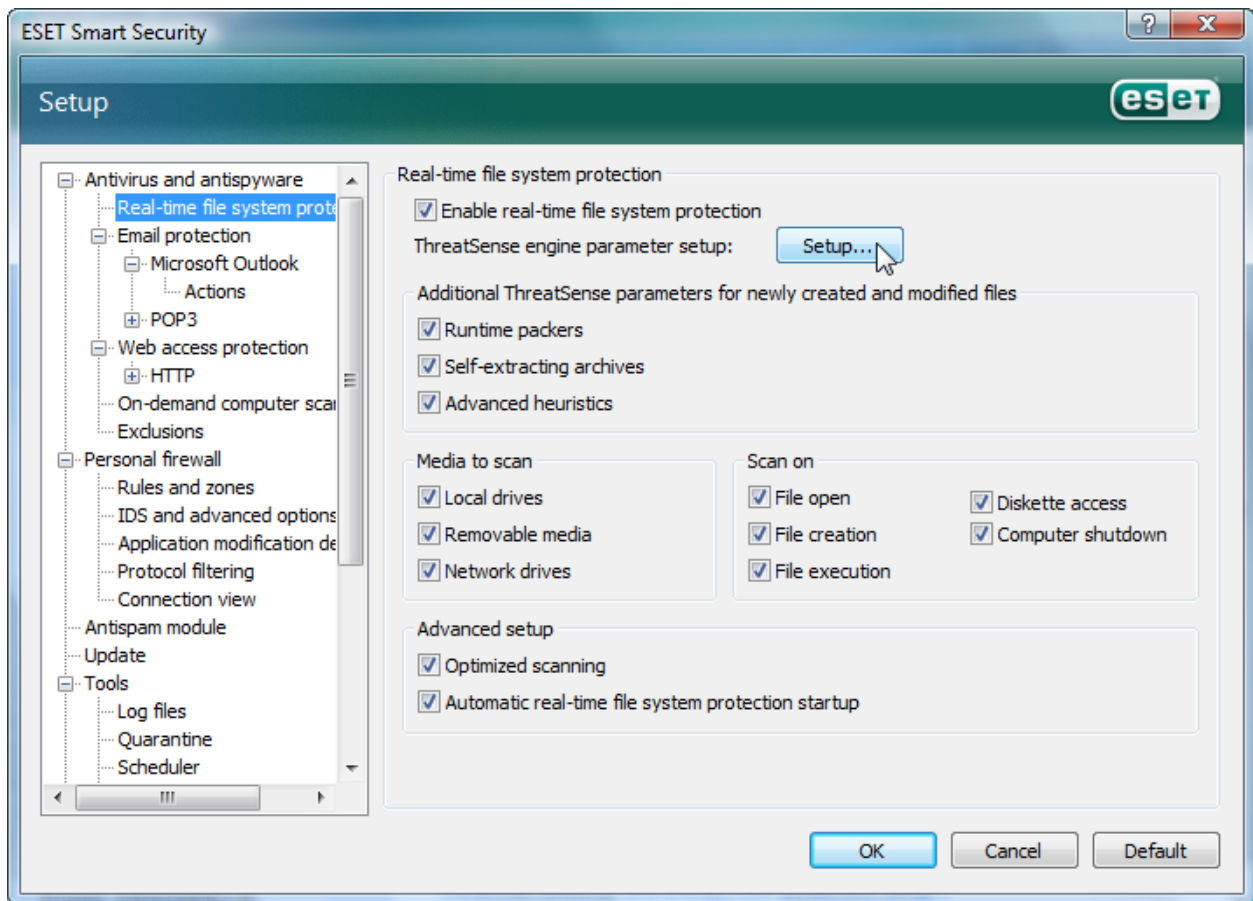


Figure 4-2

Choose your desired Cleaning level. For standard game play, we recommend the default setting (Standard). The Standard setting will automatically clean any infected file it can without displaying pop-up notifications, but will still alert you if an object cannot be cleaned or deleted automatically. For tournament play, you may wish to select **Strict cleaning**, which will not alert you in either case (If you select **Strict Cleaning**, be sure to check the ESET logs at least daily by clicking **Tools > Log files** from the main menu).

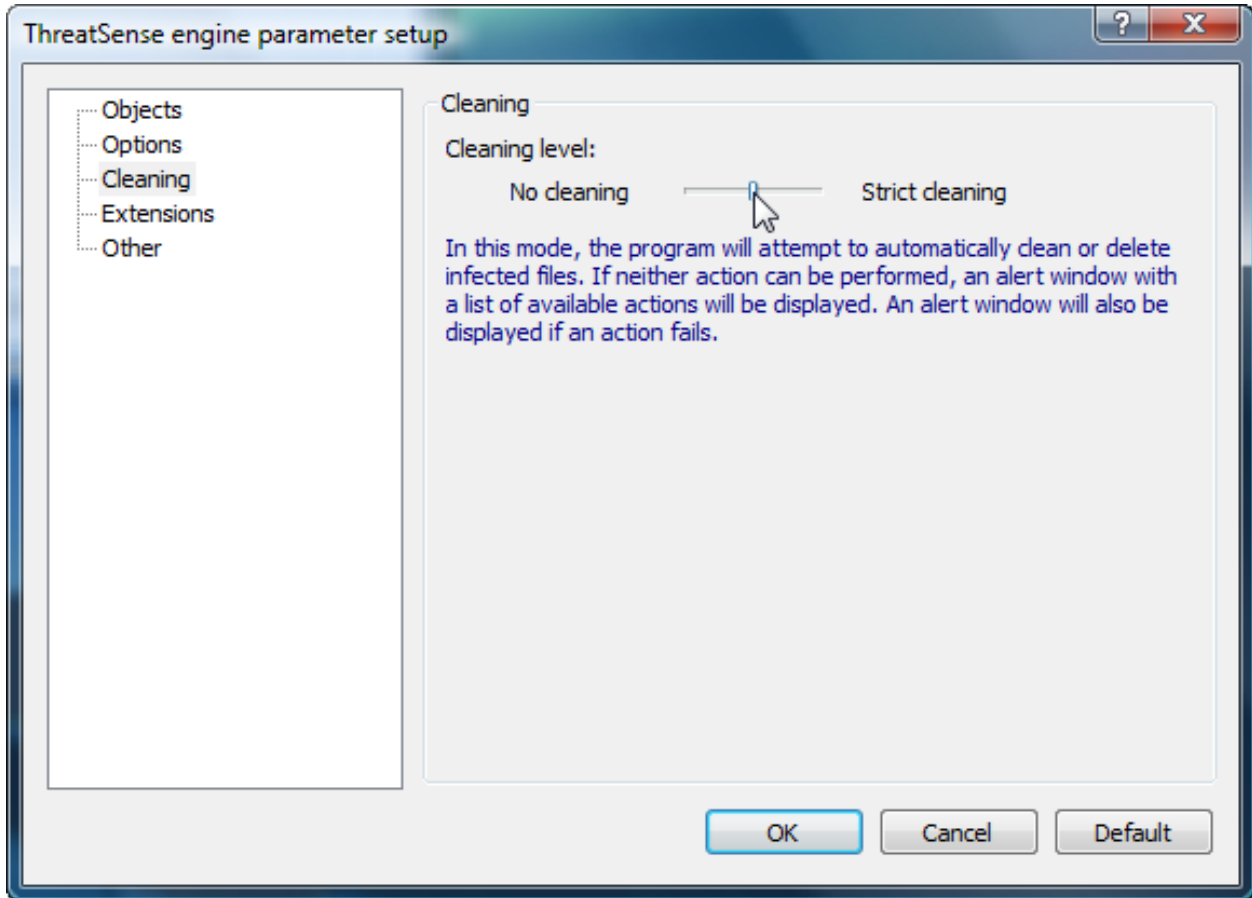


Figure 4-3

Next, click **Extensions** on the left, and deselect the **Scan all files** check box. Click **OK** to complete. Now only files with the extensions listed will be scanned as they are accessed. Extensions can be manually added or removed, but ESET keeps the list current through regular updates—changing the extensions list should not normally be necessary.

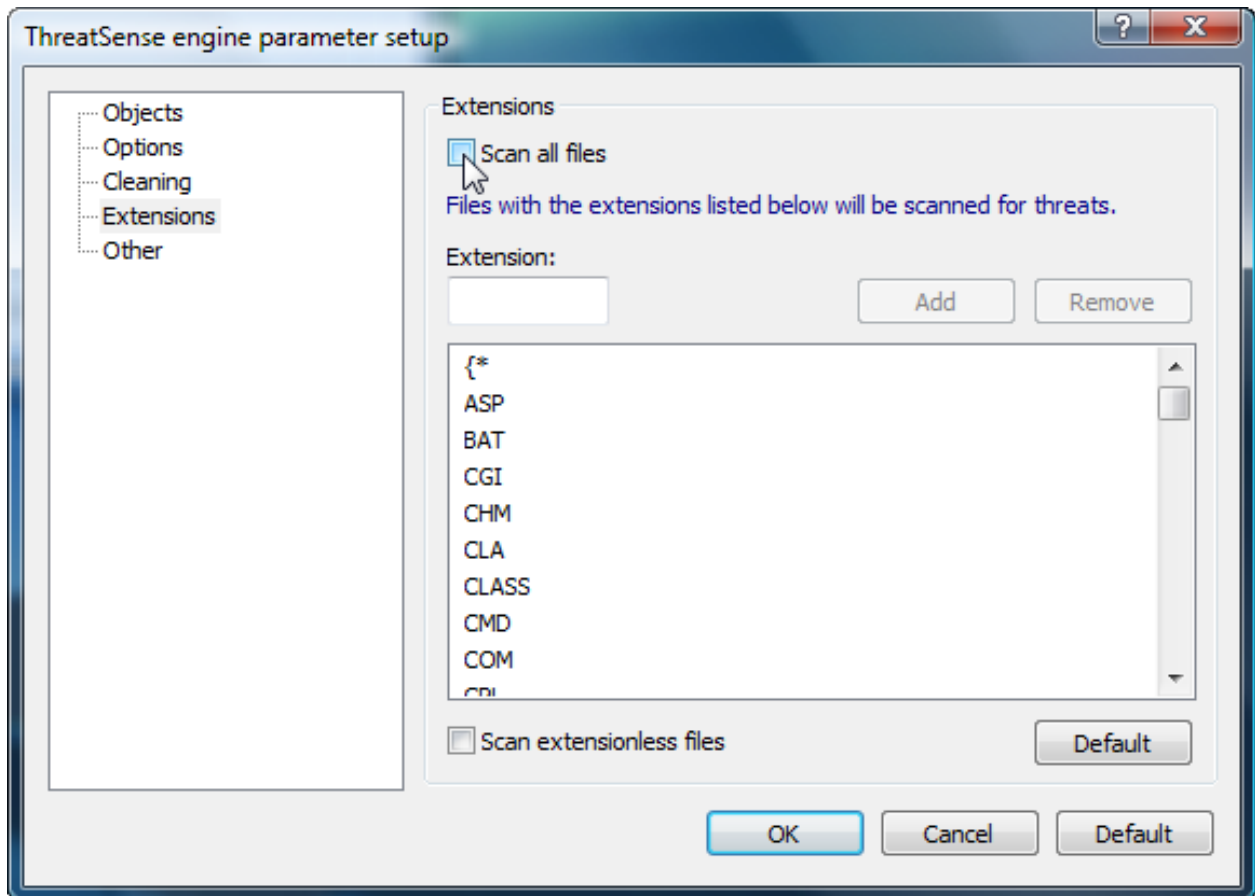


Figure 4-4

## Tip 5: Fortify defenses by setting up a daily deep scan

If you use only one tip from this guide, this is the one we recommend. While the real-time scanner can block new malware from infecting your system, a full regular scan is the only way to check the entire system for dormant or hidden malware. In addition to scanning every file, it can discover hidden rootkits, check alternate data streams, and find other stealth malware.

To get started, click **Tools > Scheduler** from the main menu, and then click **Add...**.

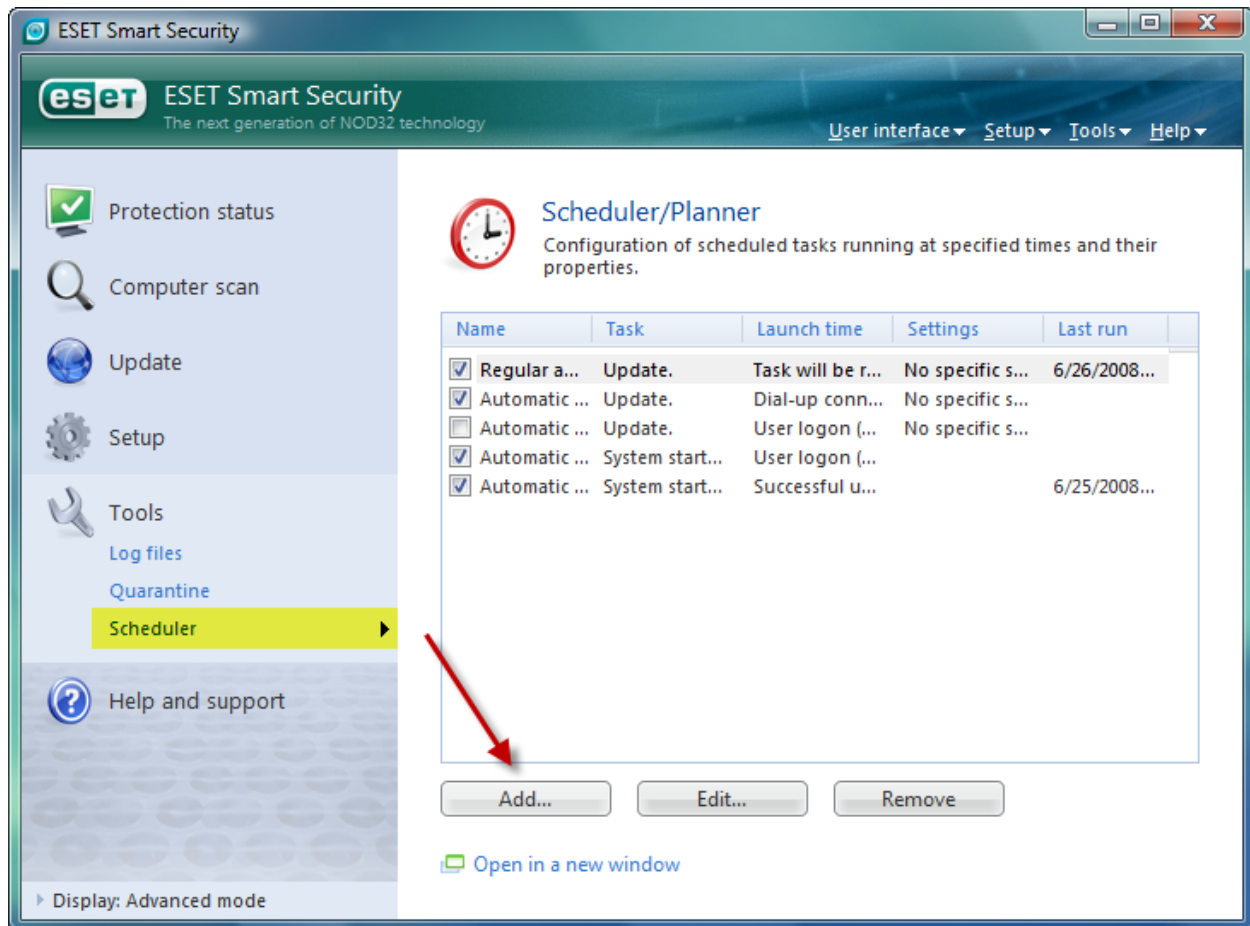


Figure 5-1

From the **Scheduled task:** drop-down menu, select **On-demand computer scan**. Click **Next**.

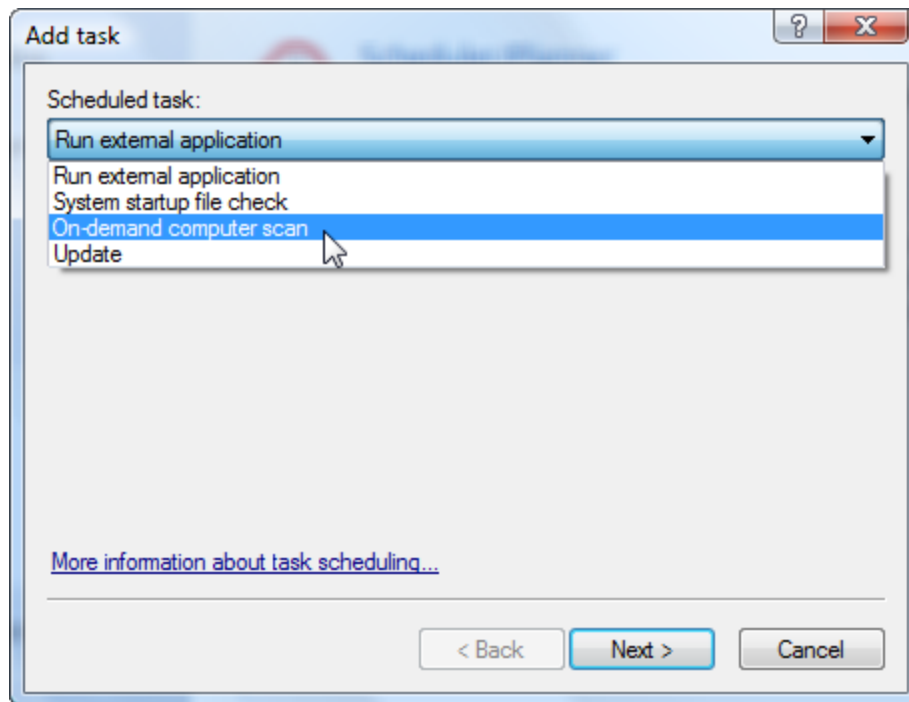


Figure 5-2

Give the task a name such as **Daily Scan** which will appear in the Scheduler. Select **Daily** for the interval and click **Next**.

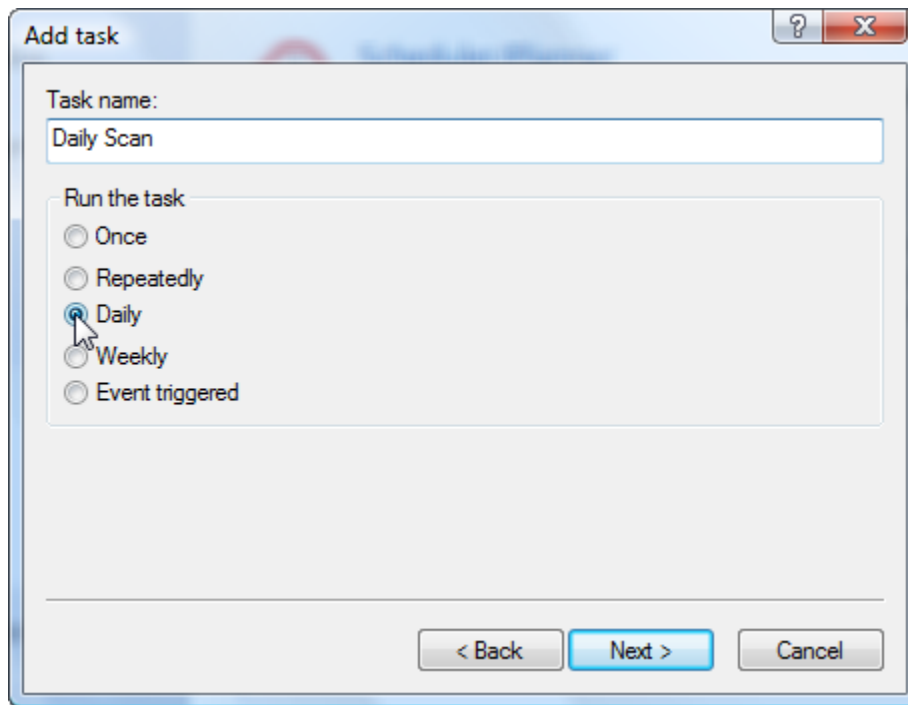


Figure 5-3

Schedule the scan for a time when the computer is normally on, but not under heavy use. Figure 5-4 shows a time five minutes after the scheduled update (see [Tip 3: For tournament play, update only during off hours](#)), but you can choose any time that makes sense for your situation.

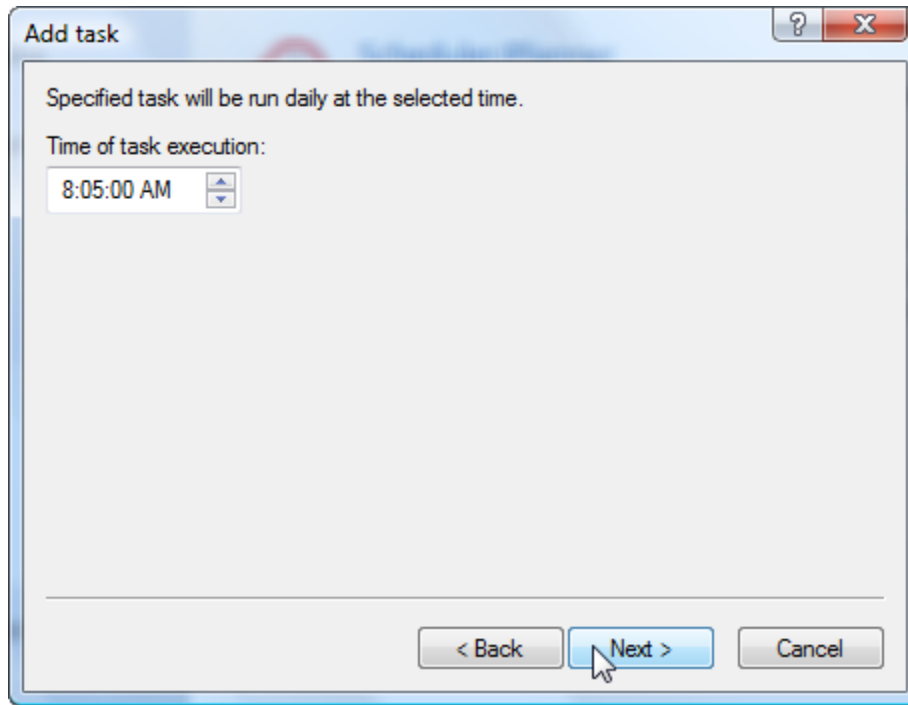


Figure 5-4

Next, decide what to do if the task cannot run at the scheduled time. Figure 5-5 shows how to configure the task to run as soon as possible, but only if 24 hours have passed since its last execution. This will ensure that the scan does not run more frequently than necessary, but also that too much time cannot elapse between scans.

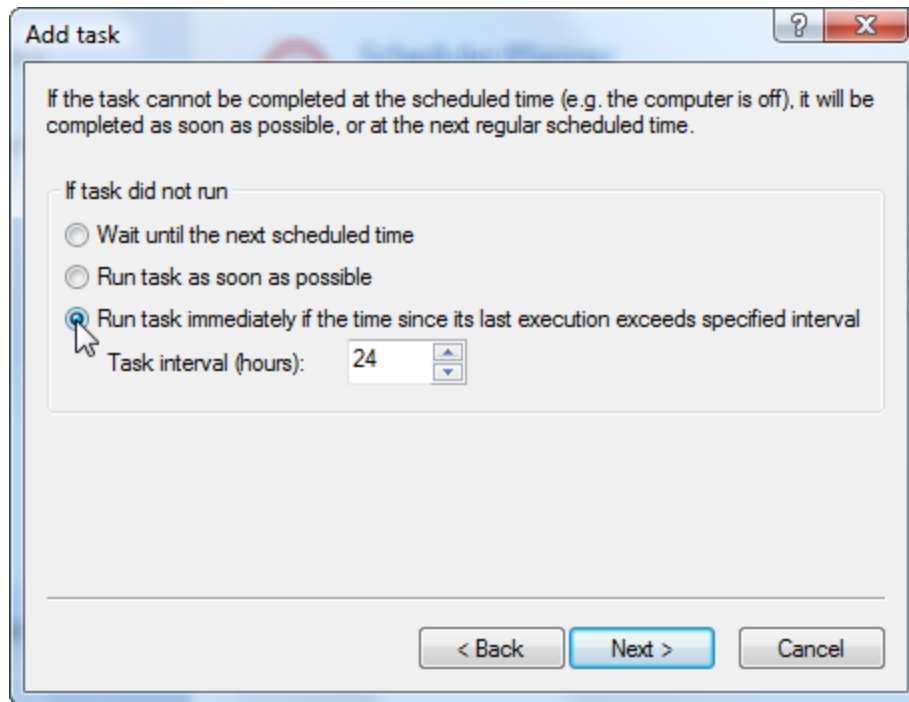


Figure 5-5

Click **Finish** to complete the schedule.

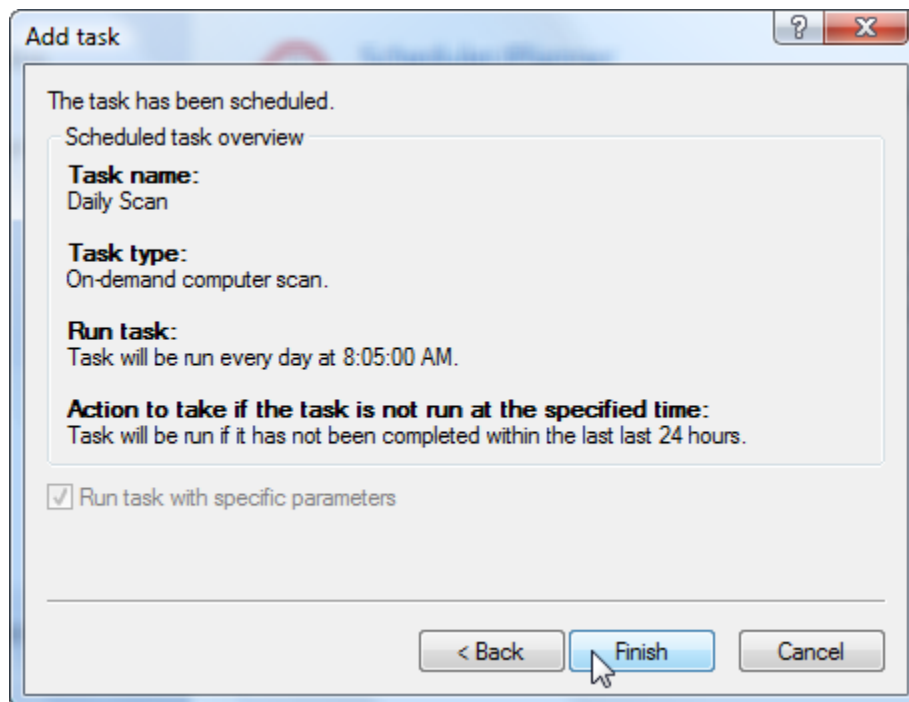


Figure 5-6

To complete the scan setup, choose the scanning profile and disks/files to scan. We recommend selecting the **In-depth** scan for maximum detection, and scanning Local drives (see Figure 5-7). You can add other drives and operating memory to the scan by selecting their check boxes.

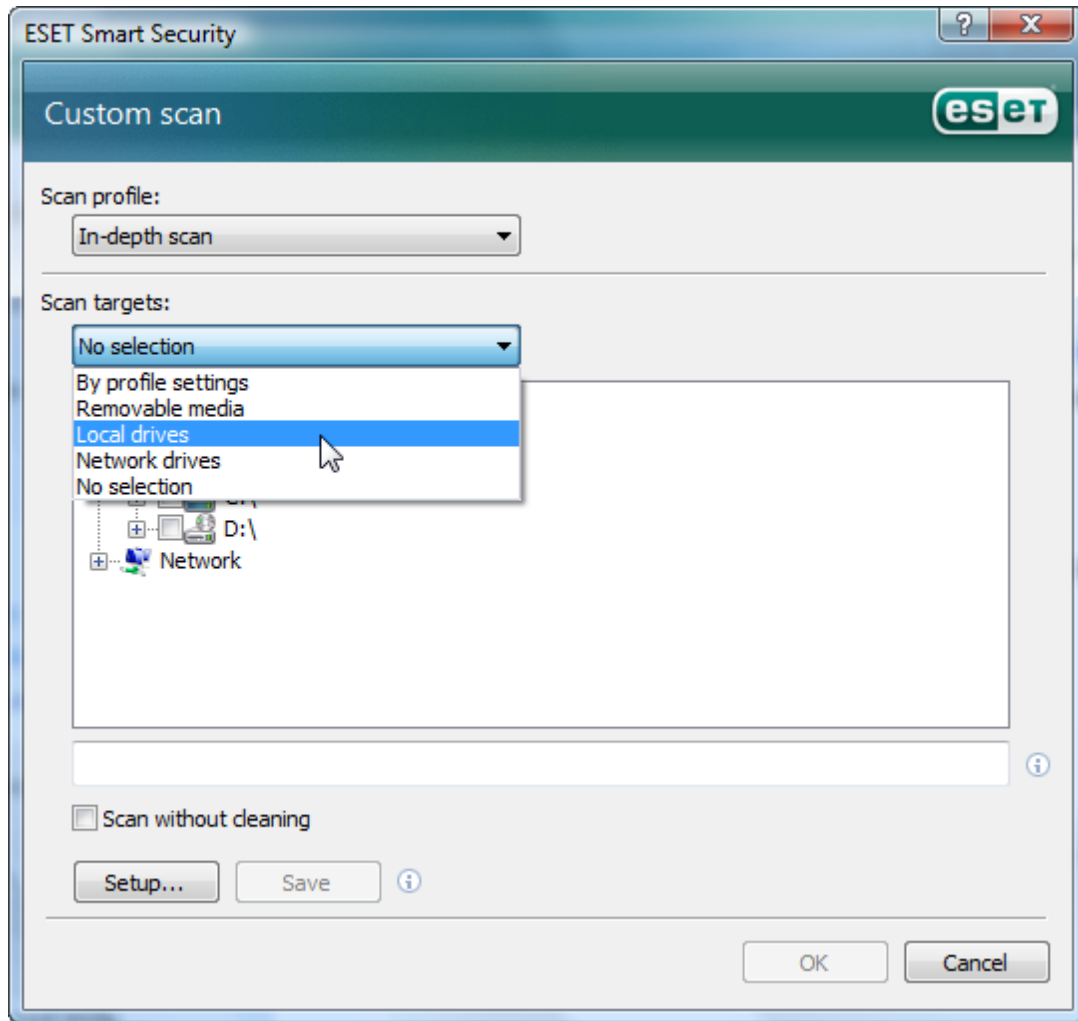


Figure 5-7

Click **OK** when finished.

## Final thoughts

We hope you found this guide useful. For more information about other settings, see the manuals available here: [www.eset.com/download/manuals.php](http://www.eset.com/download/manuals.php).

Check back from time to time - we will update this guide as we get new information from the gamers among our staff, partners, and customers.

Game on!