

ESET NOD32 Antivirus

for Mac OS X

Quick Start Guide



ESET NOD32 Antivirus provides state-of-the-art protection for your computer against malicious code. Based on the ThreatSense® scanning engine first introduced in the award-winning NOD32 antivirus system, ESET NOD32 Antivirus continues to deliver unprecedented protection against zero-day threats, without the need for constant signature updates to recognize the threats. This manual will guide you step-by-step through the quick setup and configuration of the product.



Antivirus

Proactively detects and disables more known and even unknown new malware threats than any other security product.



Antispyware

Protects you from hidden backdoors, downloaders, exploits, crackers, hijackers, password stealers, key loggers and proxys.

User interface



Protection status informs you about the current protection level of your computer and security.



A computer scan is an important part of each antivirus solution. It is used to perform a scan of the files and folders on your computer's disk(s).



The Update section contains important information about the program updates. It is vitally important for the program to update regularly to provide the maximum level of protection against the latest threats.



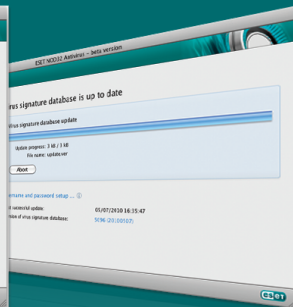
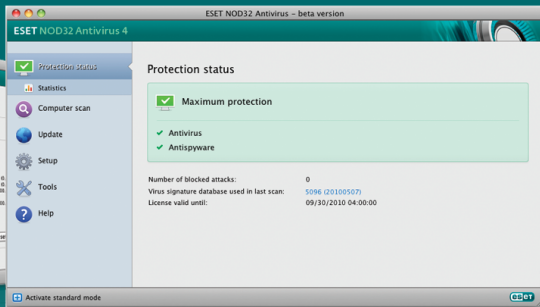
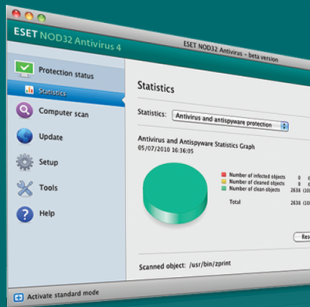
Setup options allow you to adjust the protection levels of your computer.



The Tools section, available in extended mode, allows you to enter advanced features: log files, quarantine and scheduler.



Comprehensive help and support for ESET NOD32 Antivirus. You can also contact ESET technical support directly from here.



Installation

Before commencing installation, please close all open programs on your computer. ESET NOD32 Antivirus contains components that may conflict with other antivirus programs that may already be installed on your computer. ESET strongly recommends that you remove any other program(s) to prevent potential problems. You can install ESET NOD32 Antivirus from an installation CD or from a file available on the ESET website.

To launch the installer wizard, do one of the following:

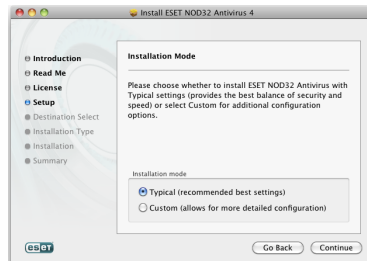
- If you are installing from the installation CD, insert the CD into the CD-ROM drive and the installation should automatically begin.
- If you are install from a downloaded file, double-click the file you downloaded to launch the installer.

After launching the installer and accepting the license agreement, the installer will offer two types of installation:

Typical – only the most important parameters will be configured during installation. Other parameters will be pre-set to their recommended settings. This mode provides our recommended comprehensive protection and is suitable for most users.

Custom – enables configuration of all advanced parameters during installation.

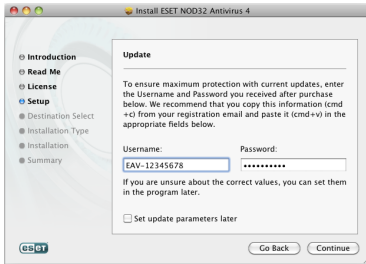
This guide describes typical installation.



Activation

For ESET NOD32 Antivirus to function correctly, it must be activated.

Enter the Username and Password you received after you purchased a license in the appropriate fields. Your username and password is required to properly download regular virus signature and program updates.

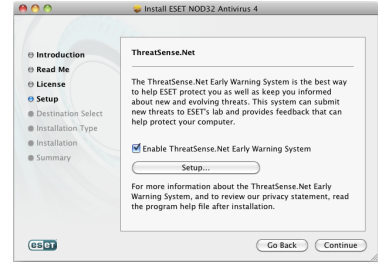


Click **Continue** to proceed to the next step.

If you would like to enter your username and password after completing the installation, select **Set update parameters later** and click **Continue**. ESET NOD32 Antivirus will still protect your computer, however, no new virus signature updates will be downloaded until the product is activated. Since it is essential that ESET NOD32 Antivirus is updated regularly to provide the maximum level of security for your computer, we recommend that you activate the program immediately after installation. To do this, click **Update > Username and password setup...** from the main program window and enter your username and password in the appropriate fields.

ThreatSense.Net

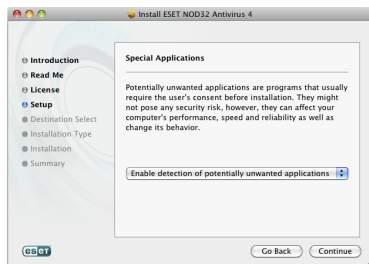
ThreatSense.Net plays an important role in our research regarding new detection technologies that enable us to proactively capture malware and thus provide you with better protection. We recommend that you leave the ThreatSense.Net Early Warning System enabled.



Click **Continue** to proceed to the next step.

Detection of potentially unwanted applications

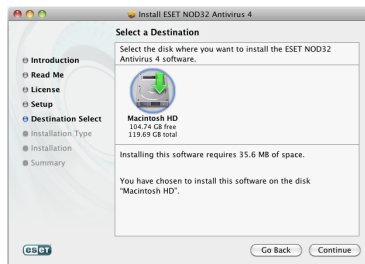
Since some potentially unwanted applications are used legitimately and might not necessarily pose a security risk, the user's consent is required to enable detection. We recommend selecting the **Enable detection of potentially unwanted applications** option.



Click **Continue** to proceed to the next step.

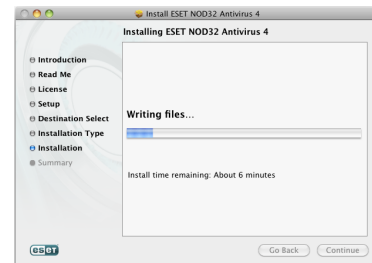
Installation location

Select a disk where you want to install ESET NOD32 Antivirus and click **Continue**.



Completing the installation



When all necessary parameters have been configured, start the final installation by clicking the **Install** button. The installation progress will be indicated by a progress bar. After installation is complete, ESET NOD32 Antivirus will start automatically. Since a computer restart is not normally required, you can carry on working with ESET NOD32 Antivirus running in the background to protect your computer from malware threats.



Starting ESET NOD32 Antivirus

ESET NOD32 Antivirus starts protecting your computer immediately after the installation. You do not have to start the program to activate it. However, at any time you may open ESET NOD32 Antivirus to check your protection status or to perform various scanning and maintenance tasks.

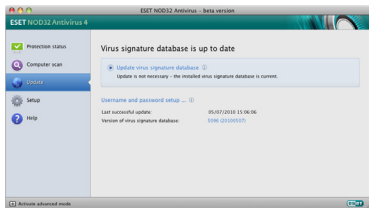
To start ESET NOD32 Antivirus do one of the following:

- Click on the ESET NOD32 Antivirus icon  in the dock.
- Click on the ESET NOD32 Antivirus icon  located in your menu bar (top of the screen) and choose **Open window**.

Entering Username and Password for update

If your license has expired and you have received a new username and password after purchasing a renewal (or you did not enter your username and password during the installation), enter your new username and password in the update setup window. Your username and password must be correctly entered to receive updates and ensure that your computer is continually protected against newly emerging threats.

In the left pane of the ESET NOD32 Antivirus screen, select **Update** and then click **Username and password setup...** on the right.



Enter the username and password to the appropriate fields and click **OK** to confirm. The username and password are both case sensitive. Enter them carefully and precisely. Copying and pasting from the license email is recommended.

Update

By default, ESET NOD32 Antivirus is set to receive regular updates (once every 60 minutes). If you entered your username and password after the installation and no update has been performed yet, we recommend starting the update manually:

- Select **Update** in the left pane of the main ESET NOD32 Antivirus screen
- Click **Update virus signature database**

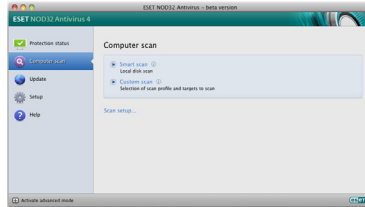
The update module will connect to the Internet, contact an available ESET

update server and download digitally signed update files, which contain the most recent malware signatures as well as new definitions for advanced heuristics and other program modules.

As soon as a newer update has been installed, ESET NOD32 Antivirus displays the new version of the virus signature database in the Mac OS menu bar.

Computer scanning

After successful installation and update, we recommend that you perform a complete computer scan to check for existing threats. To do this, click **Computer scan** in the main ESET NOD32 Antivirus screen and select **Smart scan**. ESET NOD32 Antivirus will begin scanning all local hard drives. As long as the scan continues, the status window shows the progress bar as well as the current statistics about scanned and infected files found. If a threat is detected, ESET NOD32 Antivirus will quarantine the file and display an alert. You should be able to continue working as normal while the scan takes place.




Protection Status indication


ESET NOD32 Antivirus's current protection status is indicated in the following ways:


- The menu bar icon
- A report in the **Protection status** window

In the event that any protection module is disabled, the **Protection status** window will show the name of the disabled module, along with a link allowing you to re-enable it.

The individual protection statuses are indicated by 3 colors:

 **green** – Antivirus protection is working properly; your computer is protected against malicious software and network attacks. This status indicates that all protection modules are enabled and the virus signature database is up-to-date.

 **yellow** – Real-time file system protection is enabled, but the maximum level of protection is not ensured. The yellow icon is displayed if Document protection, Email client protection or Web access protection is disabled or malfunctioning.

 **red** – The real-time file-system protection is disabled. Since the proper functioning of these modules is vital to your system's security, we recommend enabling the inactive module immediately.

Resolving Issues

ESET's technical support specialists are ready to assist you in resolving potential problems. Before contacting technical support, we strongly recommend searching for a solution on the ESET website first. This will help you to resolve the problem quickly within a couple of minutes.

Answers to the most frequently asked questions can be found at:

<http://www.eset.eu/support/faq>

For various problem solutions, directions and hints, read our knowledgebase:

<http://kb.eset.com>

To contact ESET's technical support, please fill in the support form:

<http://www.eset.com/support/contact>

