

ESET Cybersecurity

for Mac

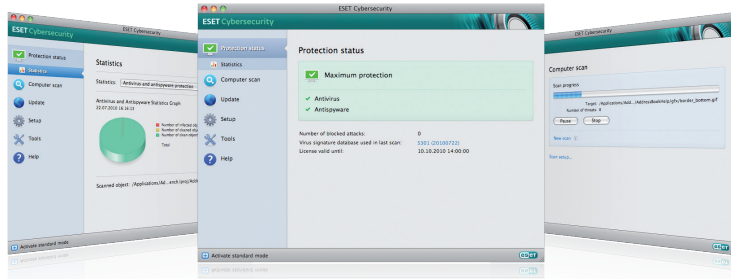
Quick Start Guide



ESET Cybersecurity provides state-of-the-art protection for your computer against malicious code. Based on the ThreatSense® scanning engine first introduced in the award-winning NOD32 antivirus system, ESET Cybersecurity continues to deliver unprecedented protection against zero-day threats, without the need for constant signature updates to recognize the threats. This manual will guide you step-by-step through the quick setup and configuration of the product.

Antivirus: Proactively detects and disables more known and even unknown new malware threats than any other security product.

Antispyware: Protects you from hidden backdoors, downloaders, exploits, crackers, hijackers, password stealers, key loggers and proxies.



Protection status informs you about the current protection level of your computer and security.



Setup options allow you to adjust the protection levels of your computer.



A computer scan is an important part of each antivirus solution. It is used to perform a scan of the files and folders on your computer's disk(s).



The Tools section, available in extended mode, allows you to enter advanced features: log files, quarantine and scheduler.



The Update section contains important information about the program updates. It is vitally important for the program to update regularly to provide the maximum level of protection against the latest threats.



Comprehensive help and support for ESET Cybersecurity. You can also contact ESET technical support directly from here.

Installation

Before you begin the installation process, please close all open programs on your computer. ESET Cybersecurity contains components that may conflict with other antivirus programs that may already be installed on your computer. ESET strongly recommends that you remove any other program(s) to prevent potential problems. You can install ESET Cybersecurity from an installation CD or from a file available on the ESET website.

To launch the installer wizard, do one of the following:

- If you are installing from the installation CD, insert the CD into the CD-ROM drive and the menu screen will appear. Double-click on the **ESET Cybersecurity Installation** icon to launch the installer.

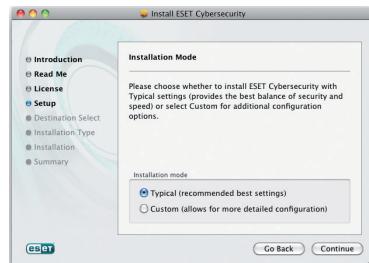
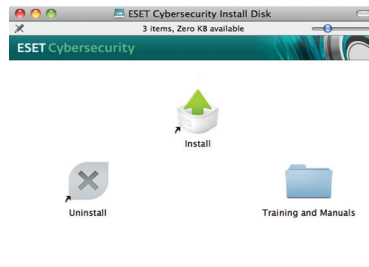
- If you are installing from a downloaded file, double-click the file you downloaded to launch the installer.
- Additional features including manuals, training and uninstalling can be accessed by double-clicking on the appropriate icon from the menu screen

After launching the installer and accepting the license agreement, the installer will offer two types of installation options:

Typical – only the most important parameters will be configured during installation. Other parameters will be pre-set to their recommended settings. This mode provides our recommended comprehensive protection and is suitable for most users.

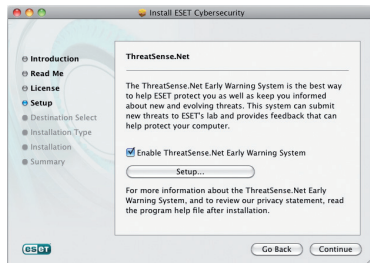
Custom – enables configuration of all advanced parameters during installation.

This guide describes typical installation.



ThreatSense.Net

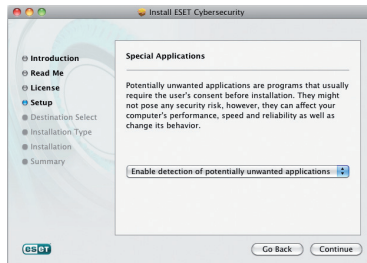
ThreatSense.Net plays an important role in our research regarding new detection technologies that enable us to proactively capture malware and thus provide you with better protection. We recommend that you leave the ThreatSense.Net Early Warning System enabled.



Click **Continue** to proceed to the next step.

Detection of potentially unwanted applications

Since some potentially unwanted applications are used legitimately and might not necessarily pose a security risk, the user's consent is required to enable detection. We recommend selecting the **Enable detection of potentially unwanted applications** option.



Click **Continue** to proceed to the next step.

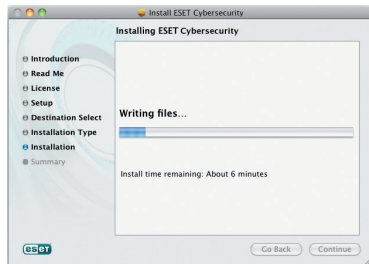
Installation location

Select a disk where you want to install ESET Cybersecurity and click **Continue**.



Completing the installation

When all necessary parameters have been configured, start the final installation by clicking the **Install** button. The installation progress will be indicated by a progress bar. After installation is complete, you must restart your computer. Simply click the **Restart** button on the Installation Completed screen.



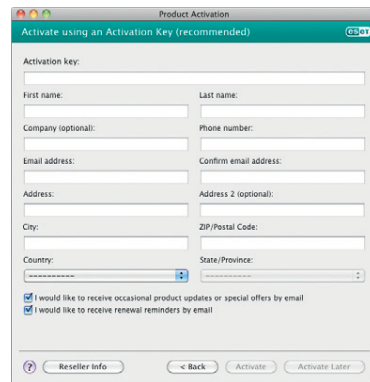
Product Activation

When you restart your machine, you will see the Product Activation Type window.

If you purchased ESET Cybersecurity online, you have already received a username and password. Select **Activate using a Username and Password** and click **Next**. Enter your username (including the hyphen) and password carefully. Click **Activate** to complete the activation process.

If you purchased a retail copy of ESET Cybersecurity, select **Activate using an Activation Key**. The Activation key is usually supplied on the back of the product package and inside your CD case and consists of 12, 13 or 20 characters. Ensure that your email address is entered correctly, as the username and password required for updating ESET Cybersecurity will be sent to this address. After


clicking **Activate**, your username and password will be entered for you automatically. If you choose not to activate at this time, click **Activate later**. If you selected activate later, the Product Activation window will appear the next time you start your system. The method for entering a username and password manually is described in the following section.

A screenshot of the ESET Product Activation window. The window title is "Product Activation". The main area shows "Activate using an Activation Key (recommended)". Below this, there are several input fields: "Activation key:", "First name:", "Last name:", "Company (optional):", "Phone number:", "Email address:", "Confirm email address:", "Address:", "Address 2 (optional):", "City:", "ZIP/Postal Code:", "Country:", and "State/Province:". At the bottom, there are two checked checkboxes: "I would like to receive occasional product updates or special offers by email" and "I would like to receive renewal reminders by email". At the very bottom, there are buttons for "Reseller Info", "< Back", "Activate", and "Activate Later".

Starting ESET Cybersecurity

ESET Cybersecurity starts protecting your computer immediately after activation. At any time you may open ESET Cybersecurity to check your protection status or to perform various scanning and maintenance tasks.

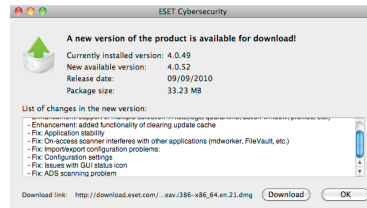
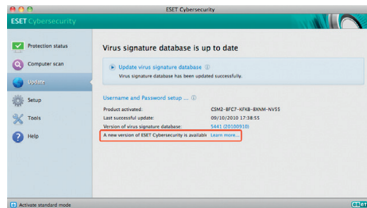
To start ESET Cybersecurity:

- Click on the ESET Cybersecurity icon  located in your menu bar (top of the screen) and choose **Open window**.

Check for new version

For maximum protection, it is important to use the latest build of ESET Cybersecurity. To check for a new version, click **Update** from the main menu on the left. If a new build is available, a message that says "A new version of ESET Cybersecurity is available" will be displayed at the bottom of the window. Click **Learn more...** to display a new window containing the version number of the new build and the list of changes in the new version or other important info. Click **Download** to download the latest

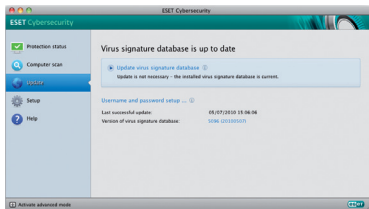
build. Click **OK** to close the window and download the upgrade later. If you clicked **Download**, the file will be downloaded to your downloads folder (or the default folder set by your browser). When the file has finished downloading, launch the file and follow the installation directions. Your username and password will be automatically transferred to the new installation. It is recommended to check for upgrades regularly, and especially after a recent installation.



Entering Username and Password for update

If you purchased ESET Cybersecurity online, you must enter the username and password you received with your license email. You will also need to enter the username and password if you are renewing or reinstalling the software.

In the left pane of the ESET Cybersecurity screen, select **Update** and then click **Username and password setup...** on the right.



Enter the username and password to the appropriate fields and click **OK** to confirm. The username and password are both case sensitive. Enter them carefully and precisely. Copying and pasting from the license email is recommended.

Your username and password must be correctly entered to receive updates and ensure that your computer is continually protected against newly emerging threats.

Update

By default, ESET Cybersecurity is set to receive regular updates (once every 60 minutes). If you entered your username and password after the installation and no update has been performed yet, we recommend starting the update manually:

- Select **Update** in the left pane of the main ESET Cybersecurity screen

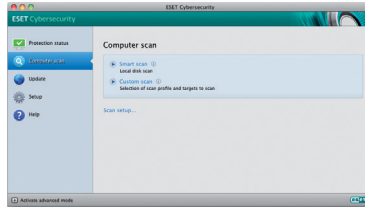
- Click **Update virus signature database**

The update module will connect to the Internet, contact an available ESET update server and download digitally signed update files, which contain the most recent malware signatures as well as new definitions for advanced heuristics and other program modules.

As soon as a newer update has been installed, ESET Cybersecurity displays the new version of the virus signature database in the Mac OS menu bar.

Computer scanning

After successful installation and update, we recommend that you perform a complete computer scan to check for existing threats. To do this, click **Computer scan** in the main ESET Cybersecurity screen and select **Smart scan**. ESET Cybersecurity will begin scanning all local hard drives. As long as the scan continues, the status window shows the progress bar as well as the current statistics about scanned and infected files found. If a threat is detected, ESET Cybersecurity will quarantine the file and display an alert. You should be able to continue working as normal while the scan takes place.




Protection Status indication


ESET Cybersecurity's current protection status is indicated in the following ways:


- The menu bar icon
- A report in the **Protection status** window

In the event that any protection module is disabled, the **Protection status** window will show the name of the disabled module, along with a link allowing you to re-enable it.

The individual protection statuses are indicated by 3 colors:

 **green** – Antivirus protection is working properly; your computer is protected against malicious software and network attacks. This status indicates that all protection modules are enabled and the virus signature database is up-to-date.

 **yellow** – Real-time file system protection is enabled, but the maximum level of protection is not ensured. The yellow icon is displayed if ESET Cybersecurity requires your attention.

 **red** – The Real-time file-system protection is disabled. Since the proper functioning of these modules is vital to your system's security, we recommend enabling the inactive module immediately.

Resolving Issues

ESET's technical support specialists are ready to assist you in resolving potential problems. Before contacting technical support, we strongly recommend searching for a solution on the ESET website first. This will help you to resolve the problem quickly within a couple of minutes.

Answers to the most frequently asked questions can be found at:

<http://kb.eset.com/faq>

For various problem solutions, directions and hints, read our knowledgebase:

<http://kb.eset.com>

To contact ESET's technical support, please fill in the support form:

<http://www.eset.com/support/contact>

